



Sovereign House, Leighton Buzzard, LU7 1GR

Offers In Excess Of £190,000

2 2 2 c

Sovereign House, Leighton Buzzard, LU7 1GR

- Stunning and Unique Office Conversion
- Secure Underground Parking For Two Vehicles
- Located within Leighton Buzzard Town Centre
- Two Large Double Bedrooms
- Ensuite to Master Bedroom
- 28Ft Open Plan Living/Dining/Kitchen Area
- No Upper Chain
- Only 0.8 Miles from Train Station
- Far Reaching Views from Juliet Balcony
- Lift Access

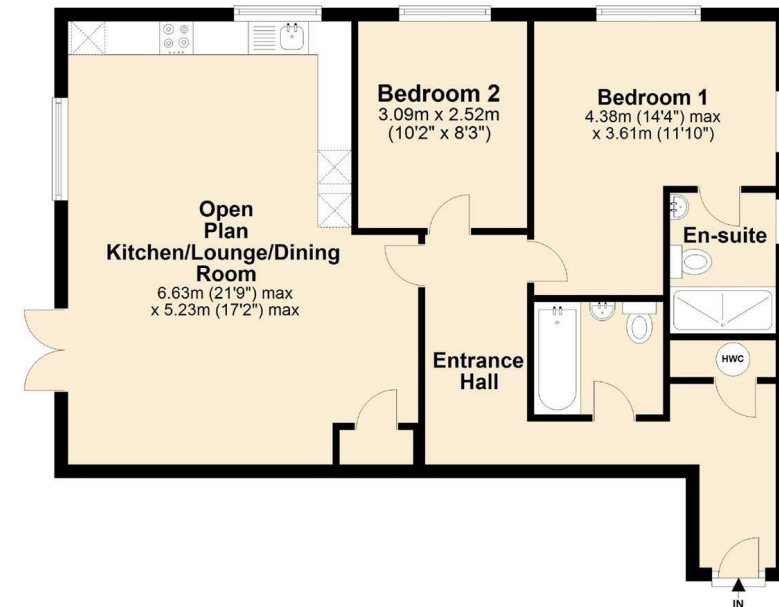


Floor Plan



Ground Floor

Approx. 71.9 sq. metres (773.5 sq. feet)



Total area: approx. 71.9 sq. metres (773.5 sq. feet)

Viewing

Please contact our Leighton Buzzard Office on 01525 377733.

If you wish to arrange a viewing appointment for this property or require further information.

IMPORTANT: Whilst we aim to make our details accurate and reliable, if there is any point of particular concern to you, please contact the office. The apparatus, equipment, fittings and services have not been checked and therefore it is in the purchaser's interest to establish the working condition of the appliance included. Personal items such as furnishings which may be shown in the photographs are not included in the asking price. No survey has been carried out by M & M Properties. Measurements have a tolerance of +/- 3". Please note that this floorplan has not been drawn to scale and is therefore for room layout purposes only. It does not constitute or form part of a contract. Doors may be hung in opposite directions.

27/29 Hockliffe Street, Leighton Buzzard - LU7 1EZ

Sales: 01525 377733 - Lettings: 01525 371997

sales@mandmproperties.co.uk - lettings@mandmproperties.co.uk

LOCAL PEOPLE WORKING FOR YOU